

vtech®

Instruction Manual

**Toot-Toot  
Friends™**

## **Pony & Friends Stable**



**VTech understands that a child's needs and abilities change as they grow and with that in mind we develop our toys to teach and entertain at just the right level...**

## **vtech** Baby

**Toys that will stimulate their interest in different textures, sounds and colours**

### **I am...**

...responding to colours, sounds and textures

...understanding cause and effect

...learning to touch, reach, grasp, sit-up, crawl and toddle

**Birth-36 months**



## **Pre-School**

**Interactive toys to develop their imagination and encourage language development**

### **I want...**

...to get ready for school by starting to learn the alphabet and counting

...my learning to be as fun, easy and exciting as can be

...to show my creativity with drawing and music so my whole brain develops

**3-6 years**



## **Electronic Learning Computers**

**Cool, aspirational and inspiring computers for curriculum related learning**

### **I need...**

...challenging activities that can keep pace with my growing mind

...intelligent technology that adapts to my level of learning

...National Curriculum based content to support what I'm learning at school

**4-10 years**

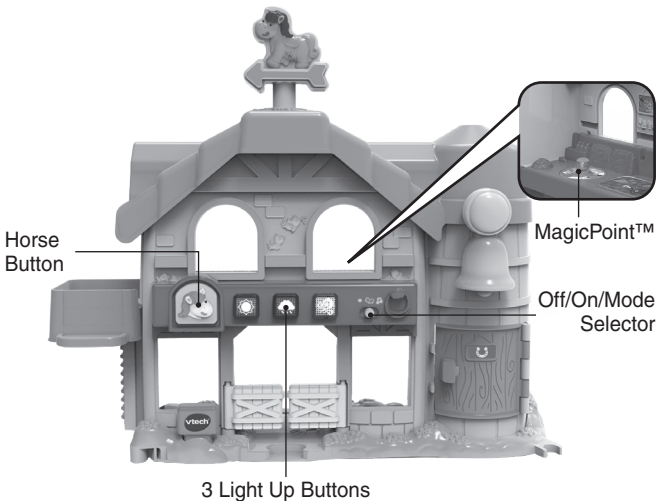


To learn more about this and other VTech® products, visit [www.vtech.co.uk](http://www.vtech.co.uk)

# INTRODUCTION

Thank you for purchasing the **Pony & Friends Stable**.

Cute stable play set comes with lots of role-play features, including multiple areas of play, 9 accessories and MagicPoint™ location for fun character interaction!



One MagicPoint™  
Character



Two Horses



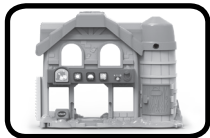
One Yellow  
Bucket



One Yellow  
Rake

# INCLUDED IN THIS PACKAGE

**NOTE:** This toy is not intended for teething.



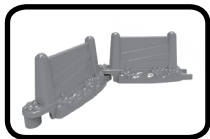
One Stable House



Two Horses



One MagicPoint™  
Character - Emma



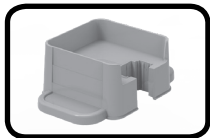
Two Fences



One Yellow Rake



One Yellow Bucket



One Lift



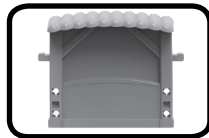
One Weather Vane



One Small Bell



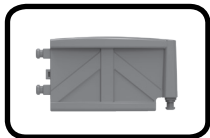
Four Gates



One Back Wall



One Threshold



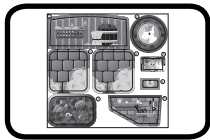
One Left Fence



One Right Fence



One Card Backdrop



One Label Sheet

- One Quick Start Guide

### **WARNING:**

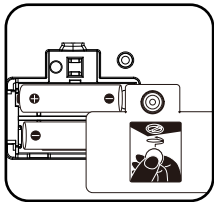
All packing materials such as tape, plastic sheets, packaging locks, removable tags, cable ties, cords and packaging screws are not part of this toy and should be discarded for your child's safety.

**NOTE:** Please save this Instruction Manual as it contains important information.

## **GETTING STARTED**

### **Battery Removal and Installation**

1. Make sure the unit is turned **OFF**.
2. Find the battery cover located underneath the MagicPoint™ and use a screwdriver to loosen the screw and open the battery cover.
3. Remove old batteries by pulling up on one end of each battery.
4. Install 2 new AA batteries following the diagram inside the battery box.



5. Replace the battery cover and tighten the screw to secure.

**WARNING:** Adult assembly required for battery installation. Keep batteries out of reach of children.

## **IMPORTANT: BATTERY INFORMATION**

- Insert batteries with the correct polarity (+ and -).
- Do not mix old and new batteries.
- Do not mix alkaline, standard (carbon-zinc) or rechargeable batteries.
- Only batteries of the same or equivalent type as recommended are to be used.
- Do not short-circuit the supply terminals.
- Remove batteries during long periods of non-use.
- Remove exhausted batteries from the toy.
- Dispose of batteries safely. Do not dispose of batteries in fire.

### **RECHARGEABLE BATTERIES:**

- Remove rechargeable batteries from the toy before charging.
- Rechargeable batteries are only to be charged under adult supervision.
- Do not charge non-rechargeable batteries.

## **Disposal of batteries and product**



The crossed-out wheellie bin symbols on products and batteries, or on their respective packaging, indicates they must not be disposed of in domestic waste as they contain substances that can be damaging to the environment and human health.



The chemical symbols Hg, Cd or Pb, where marked, indicate that the battery contains more than the specified value of mercury (Hg), cadmium (Cd) or lead (Pb) set out in the Batteries and Accumulators Regulation.

The solid bar indicates that the product was placed on the market after 13th August, 2005.

Help protect the environment by disposing of your product or batteries responsibly.

### **VTech® cares for the planet.**

Care for the environment and give your toy a second life by disposing of it at a small electricals collection point so all its materials can be recycled.

#### **In the UK:**

Visit [www.recyclenow.com](http://www.recyclenow.com) to see a list of collection points near you.

#### **In Australia & New Zealand:**

Check with your local council for kerbside collections.

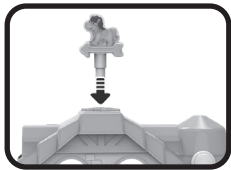
## **CAUTION:**

Adult assembly required. For your child's safety, do not let your child play with this toy until it is fully assembled.

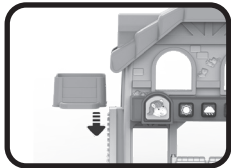
## **ASSEMBLY INSTRUCTIONS**

With the **VTech® Toot-Toot Friends™**, safety comes first. To ensure your child's safety, adult assembly is required.

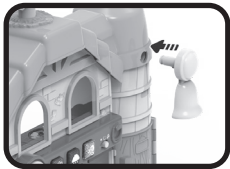
1. Insert the **Weather Vane** as shown in the picture.



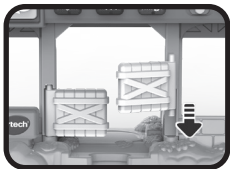
2. Insert the **Lift** as shown in the picture.



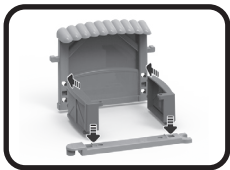
3. Insert the **Small Bell** as shown in the picture.



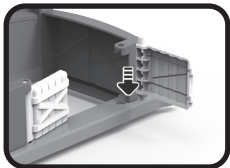
4. Insert the Gates of the **Stable House** as shown in the picture.



5. To assemble the **Fences** for the small stable: Insert one side of the **Left and Right Fences** on to the **Back Wall**, then insert the other sides into both sides of the **Threshold**, as shown in the picture.



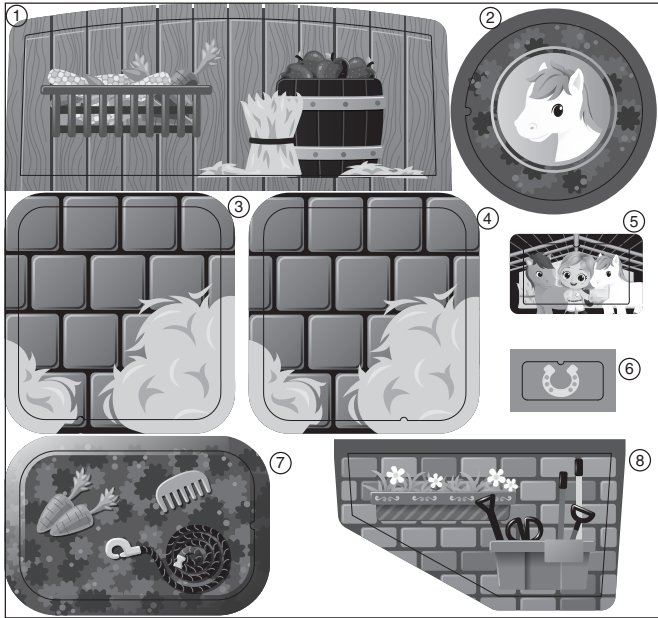
6. Insert the **Gates** in to the **Fences** on the small stable as shown in the picture.

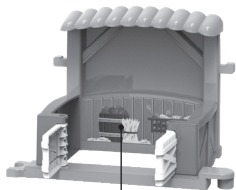




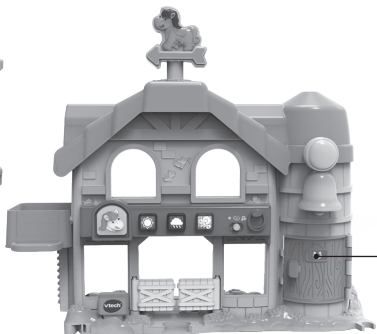
# LABEL APPLICATION

Please securely stick the labels to the play set as indicated below.

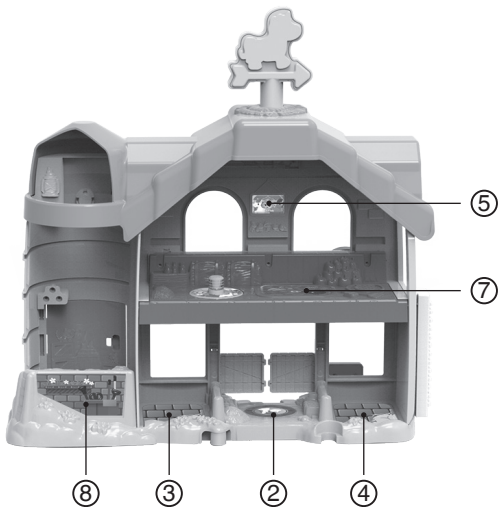




①



⑥



⑤

⑦

⑧

③

②

④

# PRODUCT FEATURES

## 1. Off/On/Mode Selector

Slide the **Off/On/Mode Selector** to choose a mode of play. The two modes of play are Learning and Music & Sounds.



## 2. 3 Light Up Buttons

Press the buttons to learn about colours and the weather, and hear related sounds and fun melodies.



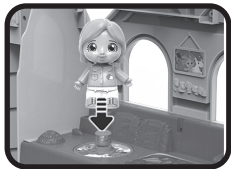
## 3. Horse Button

Press the button to learn horse facts, hear different horse sounds, a song and fun melodies.



## 4. MagicPoint™

Place the MagicPoint™ character - Emma on the MagicPoint™ to hear her introduce herself and her life in the stable, and hear fun songs. Place other MagicPoint™ Characters on the MagicPoint™ to hear happy responses.



## 5. Automatic Shut-Off

To preserve battery life, the **Pony & Friends Stable** will shut off automatically after several minutes without input. The unit can be turned on again by sliding the **Off/On/Mode Switch**. The unit will also automatically turn off when the batteries are very low.

### NOTE

If the unit powers down while playing, we suggest installing a brand new set of batteries.

## ACTIVITIES

### 1. Learning Mode

Press the three **3 Light Up Buttons** to learn about colours, weather & hear related sounds. Press the **Horse Button** to learn facts about the horse and hear different horse sounds. Place the MagicPoint™ character on the **MagicPoint™** to hear her introduce herself and her life in the stable. Place other MagicPoint™ characters on the **MagicPoint™** to hear happy responses.

### 2. Music & Sounds Mode

Press the **3 Light Up Buttons** to hear fun melodies and sounds. Press the **Horse Button** to hear a song about the horse and fun melodies. Place the MagicPoint™ character on the **MagicPoint™** to hear her singing happily. Place other characters on the **MagicPoint™** to hear happy responses.

# SONG LYRICS

## Opening Song

Hello there and welcome to our stable,  
Come and care for the horses with me!

## Song 01

Horses have two ears  
Horses have four legs  
Horses make great friends.

## Song 02

Hello, my name is Emma,  
I love to ride on my horse,  
We have lots of fun together,  
Riding round and round.

## Song 03

Ride my white horse, clippity clop  
Ride my brown horse  
Both are my friends, clippity clop  
Friends are the best!

## Song 04

Lots of rain is falling down  
All day long, all day long  
Sunny, windy, rainy now  
What is next?

## Melody List

1. Rockin' Robin
2. Old MacDonald Had a Farm
3. The Wheels on the Bus
4. It's Raining, It's Pouring

5. Row, Row, Row Your Boat
6. Old King Cole
7. On Top of Old Smokey
8. Bicycle Built for Two
9. Rock-A-Bye Baby

## CARE & MAINTENANCE

1. Keep the product and its metal parts clean by wiping them with a slightly damp cloth.
2. Keep the product out of direct sunlight and away from any direct heat sources.
3. Remove the batteries when the product is not in use for an extended period of time.
4. Do not drop the product on a hard surface and do not expose the product to excess moisture or water.

## TROUBLESHOOTING

If for some reason the toy stops working or malfunctions, please follow these steps:

1. Turn the unit **Off**.

If the toy still does not function, or if for some reason the toy stops working or malfunctions on its own, please follow these steps:

2. Interrupt the power supply by removing the batteries.
3. Let the unit stand for a few minutes, then replace the batteries.
4. Turn the unit **On**. The unit should now be ready to use again.
5. If the unit still does not work, install a new set of batteries.

If the problem persists, please contact our Consumer Services.

Department and a service representative will be happy to help you.

# CONSUMER SERVICES

Creating and developing **VTech**<sup>®</sup> products is accompanied by a responsibility that we at **VTech**<sup>®</sup> take very seriously. We make every effort to ensure the accuracy of the information, which forms the value of our products. However, errors sometimes can occur. It is important for you to know that we stand behind our products and encourage you to call our Consumer Services Department with any problems and/or suggestions that you might have. A service representative will be happy to help you.

## **UK Customers:**

Phone: 0330 678 0149 (from UK) or +44 330 678 0149 (outside UK)  
Website: [www.vtech.co.uk/support](http://www.vtech.co.uk/support)

## **Australian Customers:**

Phone: 1800 862 155  
Website: [support.vtech.com.au](http://support.vtech.com.au)

## **NZ Customers:**

Phone: 0800 400 785  
Website: [support.vtech.com.au](http://support.vtech.com.au)

# PRODUCT WARRANTY/ CONSUMER GUARANTEES

## **UK Customers:**

Read our complete warranty policy online at [vtech.co.uk/warranty](http://vtech.co.uk/warranty).

## **Australian Customers:**

**VTECH ELECTRONICS (AUSTRALIA) PTY LIMITED – CONSUMER GUARANTEES**

Under the Australian Consumer Law, a number of consumer guarantees apply to goods and services supplied by VTech Electronics (Australia) Pty Limited. Please refer to [vtech.com.au/consumerguarantees](http://vtech.com.au/consumerguarantees) for further information.

**Visit our website for more  
information about our products,  
downloads, resources and more.**

***www.vtech.co.uk***  
***www.vtech.com.au***



TM & © 2021 VTech Holdings Limited.  
All rights reserved.  
Printed in China.  
IM-530403-000  
Version:0